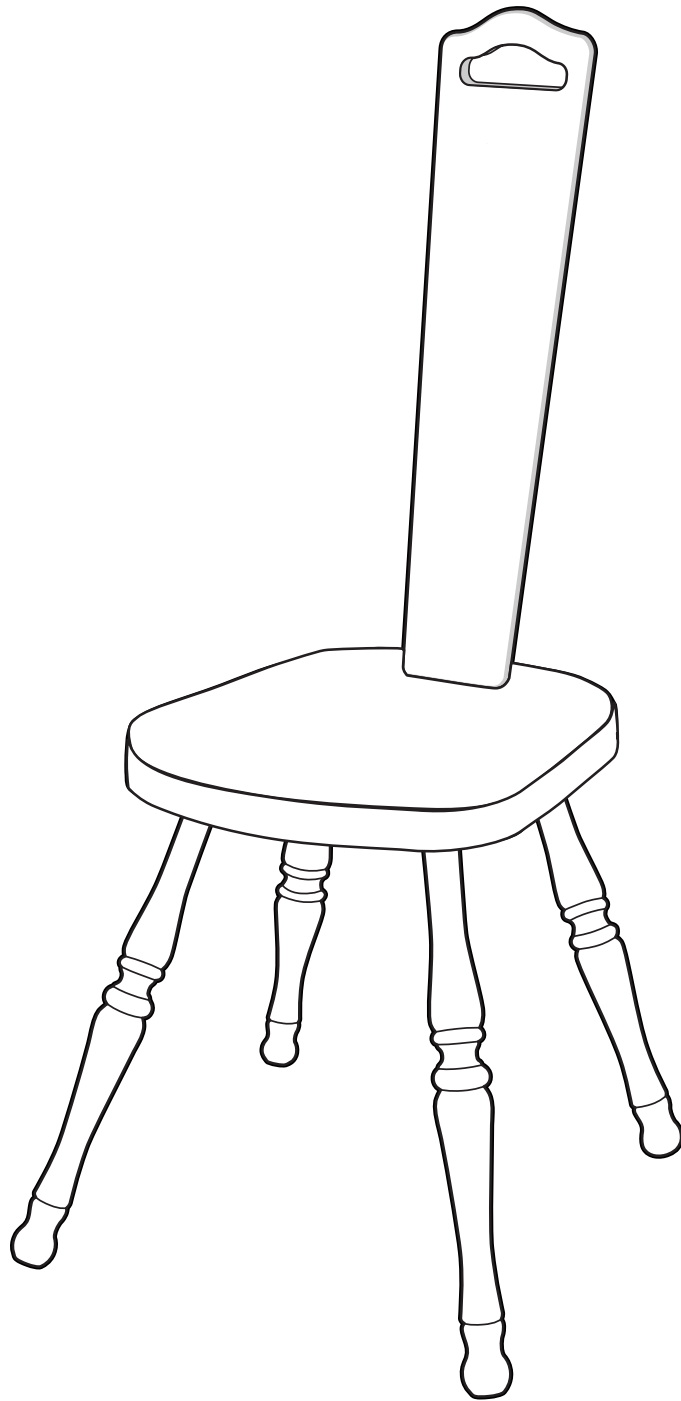


## SPINNING CHAIR



SC280622V5

## Before Commencing

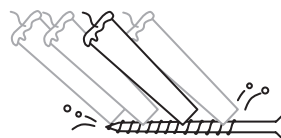
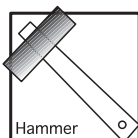
Read the instructions completely, identify the parts and note the assembly sequence. Then use the fine sandpaper supplied to remove any sharp corners or edges.

## Finishing the Wood

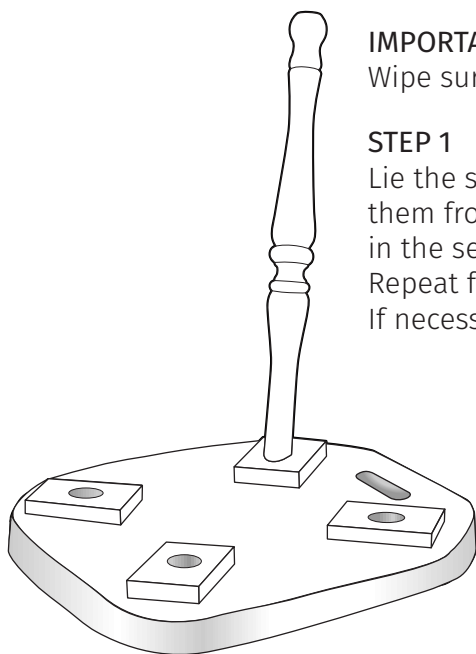
We recommend that the wood surfaces be waxed before assembly. This protects the kiln dried wood from climatic changes and enhances the beauty of the wood. Avoid waxing the dowel ends on the legs or holes.

## For the Ultimate Finish

The Ashford finishing wax polish will enhance the natural colours and beauty of the beech timber which has a lovely variety of colour and grain. The Ashford spinning chair and spinning wheels are also available factory finished in clear lacquer.



To make assembly easier use candle wax on the screws.



### IMPORTANT

Wipe surplus glue away immediately with a damp cloth to prevent staining.

### STEP 1

Lie the seat face down on a flat clean surface with a towel between to protect them from damage. Apply glue sparingly to the dowel end of one leg and hole in the seat. Carefully hammer it in until the flange is tight against the seat. Repeat for the other 3 legs and check to ensure legs sit evenly on the ground. If necessary use the sandpaper supplied to remove high spots on 2 legs.

### STEP 2

Push the seat back firmly through the slot in the seat.

### STEP 3

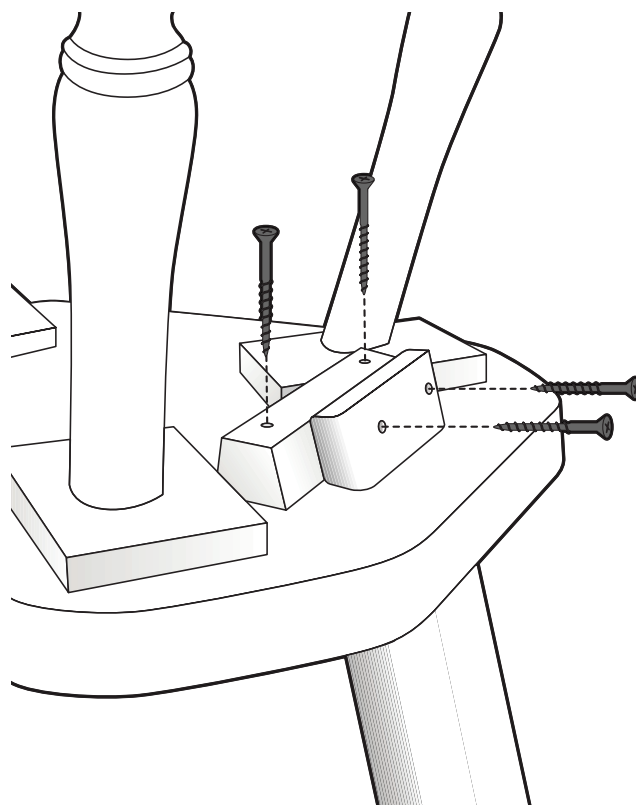
Attach the wooden block to the seat with glue and long screws.

### STEP 4

Check the seat back is vertical and then attach it to the wooden block with short screws.

### STEP 5

Allow glue to harden overnight before use with your Ashford spinning wheel.



## Ashford Handicrafts Limited

415 West Street, Ashburton 7700, New Zealand  
Telephone 64 3 308 9087  
sales@ashford.co.nz www.ashford.co.nz

## Ashford Guarantee

Thank you for purchasing this Ashford product. In the unlikely event there is any fault in manufacture, please contact the dealer you purchased it from. To validate the guarantee, please go to [www.ashford.co.nz/product-registration](http://www.ashford.co.nz/product-registration)